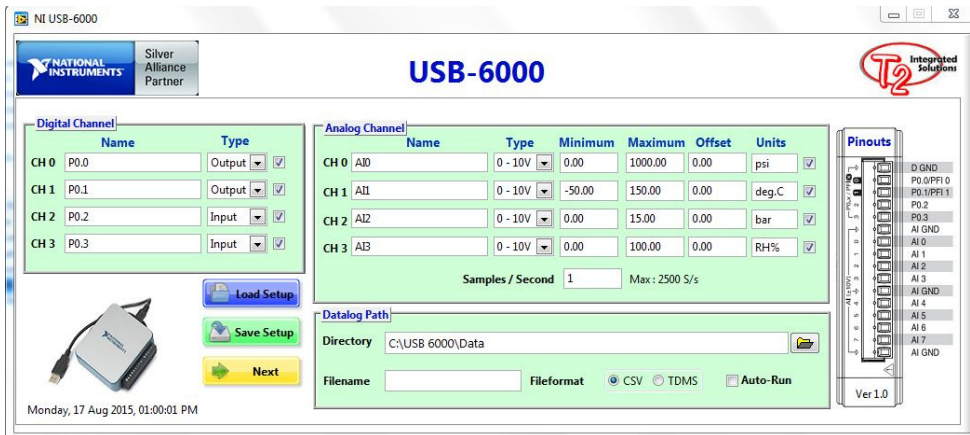


USB-6000 Software Series

USB-6000 Basic



Key Features

- Basic program with 4 analog & 4 digital bi-directional channels
- Advanced program with 8 analog & 4 digital bi-directional channels
- Datalogging feature
- Graphing feature included in Advanced program
- Easy to setup and use
- Option for one-time setup for routine tests or configurable setup for engineering tests

The USB-6000 Software Series is developed to complement the National Instruments' low-cost DAQ family (NI-USB 6000/6001/6002/6003) hardware. This software allows easy access to the hardware. Users who have purchased the NI low-cost DAQ hardware can use the USB-6000 series software to start their data acquisition projects immediately.

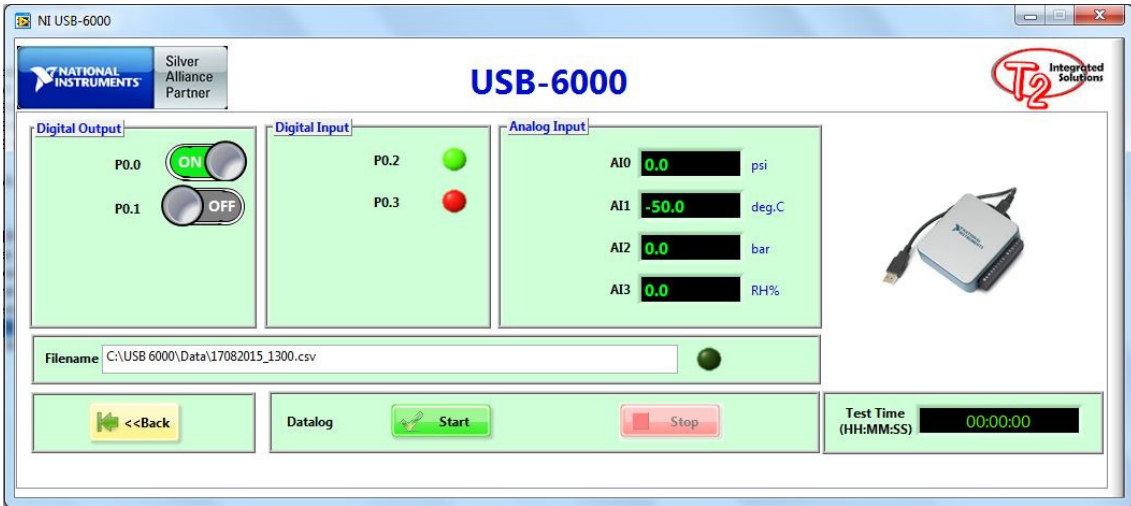
All the USB-6000 Software Series comes in two versions – the Basic and Advanced versions; both come with datalogging feature. The USB-6000 Basic version provides up to 4 analog and 4 digital bidirectional channels for configuration while the Advanced version provides up to 8 analog and 4 digital bidirectional channels and graphing feature; as well as 3 events' trigger conditions.

Setup features:

- Easy installation process
- Configure up to 4 analog and 4 digital bi-directional channels
- Option to label/name individual channels for ease of reference
- Check boxes to select/unselect a channel
- Variable sampling rate (up to a maximum of 2500 Samples/sec, 4-channel mode)
- Datalogs saved in CSV or TDMS formats
- Auto-Run function to enable one-time setup for routine tests
- Setups can be saved and loaded for future tests

Measurement features:

- Turn on/off digital output channel/s
- Data display for analog input channel/s
- Datalog start/stop with elapsed duration shown
- Datalog directory/filename displayed
- Advanced software program includes graphing feature
- 3 events' trigger conditions



USB-6000 Advanced

